



## Renewable Lubricants, Inc.

476 Griggy Rd., P.O. Box 474  
 Hartville, Ohio 44632-0474  
 Voice: 330.877.9982 Fax 330.877.2266  
 Web: www.renewablelube.com

### Bio-Valve Lube™ Gas Conditioner (For Off Highway Use)



*"Biobased Lubricants that Perform Like Synthetics"*

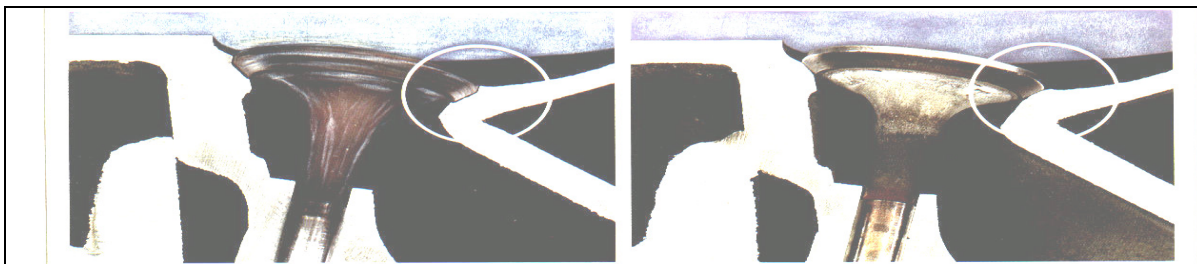
**SPECIAL UPPER CYCLINDER GAS CONDITIONER**  
 AN ENVIRONMENTALLY SAFE REPLACEMENT FOR LEAD

#### PRODUCT DESCRIPTION

**Bio-Valve Lube™** chemistry is approved for use by the EPA for off-road equipment and marine engine manufacturers. Using this highly concentrated conditioner is an absolute necessity for reducing valve seat, ring, and upper cylinder wear in engines that operate at high RPM's or under heavy loads. This technology has been extensively tested; it helps prevent expensive repairs, increases fuel efficiency, is very cost-effective, and it protects against corrosion on valves and fuel systems during use and in storage.

#### PROVEN BENEFITS

- |                                    |                                         |
|------------------------------------|-----------------------------------------|
| Longer trouble free engine life    | Prevents lost compression               |
| Higher fuel efficiency             | Protects valve seats from wear          |
| Cleans carburetor and injectors    | Lubricates piston top ring area         |
| Decreases environmental pollutants | Reduces sludge in crank case oil        |
| Cleans deposits already formed     | Dissolves resins and varnish            |
| Helps increase plug life           | Compatible with lead and unleaded fuels |
| Will not harm catalytic converters | Contains no harmful alcohol             |



(Fig. A)

(Fig. B)

Without this protection, valve seats will wear and recede into the cylinder head. (Fig. A) This results in a loss of power and fuel economy. Eventually, the engine will fail to operate after the valves no longer seal effectively. At this stage, the cylinder head will probably have to be replaced. Potential damage to the engine block is clearly an expensive situation, which can be prevented. (Fig. B)

Use in forestry, construction, mining, industrial, marine, recreational, and agricultural equipment with 4-cycle or 2-cycle and all water and air cooled engines that operate off-road. Typical equipment would include weed whackers, lawn mowers, outboard engines, chain saws, tractors, irrigation engines, water pump engines, generator engines, snowmobiles, off-road ATVs, and golf course equipment, etc.

#### HIGHLY CONCENTRATED

##### DIRECTIONS FOR USE

- 1 quart treats 125 gallons of gas
- 1 gallon treats 500 gallons of gas
- 5 gallon treats 2500 gallons of gas
- 1 drum treats 27,500 gallons of gas

##### QUANTITIES AVAILABLE

- 1 qt. Bottle (12 per case)
- 1 Gallon (4 per case)
- 5 Gallon Pail
- 55 Gallon Drum

Proprietary Formula  
 \* Trademark of Renewable Lubricants, Inc.  
 Copyright 2004 Renewable Lubricants, Inc.

<u>Availability</u>	<u>F.O.B. :Hartville, Ohio, USA</u>	<u>Quart</u>	<u>1 Gallon</u>	<u>5 Gallon Pail</u>	<u>Drum</u>	<u>Totes</u>	<u>Bulk</u>
Item #		80431	80433	80434	80436	80437	80439